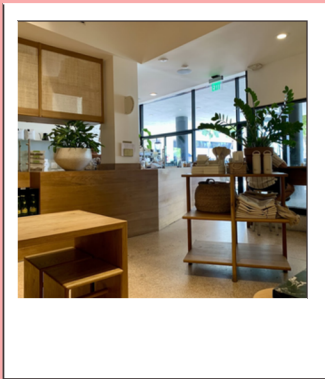


EXPLORING HISTORIC WINTER PARK

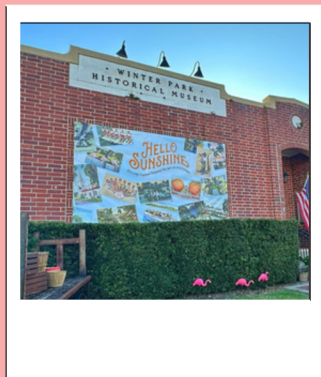
***Suggested start time:
10:00am**



NEW GENERAL CAFE & COFFEE BAR

**155 E NEW ENGLAND AVE, WINTER PARK FL
32789
TUES-SAT 8AM-3PM, SAT 10AM-2PM**

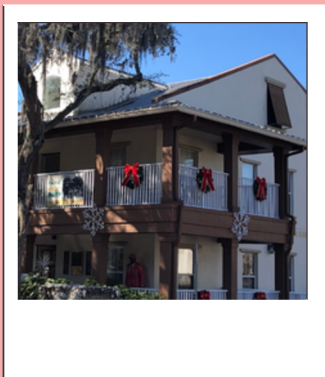
A contemporary, sustainable coffee and general store. Freshly prepared food & pastries, amazing drinks, and home goods.



WINTER PARK HISTORY MUSEUM

**200 W NEW ENGLAND AVE, WINTER PARK FL
32789
TUE-FRI 10AM-4PM, SAT 10AM-2PM**

A free entry small historic gem, the Winter Park History Museum offers a glimpse into the history behind historic Winter Park.



HANNIBAL SQUARE HERITAGE CENTER

**642 W NEW ENGLAND AVE, WINTER PARK FL
32789
TUES-THUR 10AM-4PM, FRI 12-5PM, SAT
10AM-2PM**

Run by Crealde School of Art, this community center is located in a historic neighborhood.

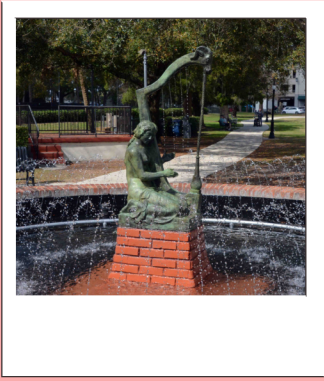
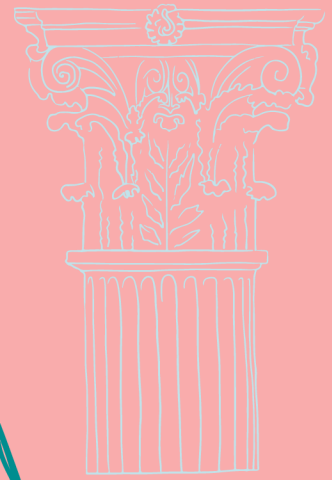


PUBLIC ART COLLECTION STOP 1 MOLECULAR DOG-SHADY PARK

**721 W NEW ENGLAND AVE, WINTER PARK FL
32789**

The City of Winter Park's Public Art Collection features almost 100 pieces of art representing various mediums from artists around the world.

Learn More about this piece: [Molecular Dog](#)

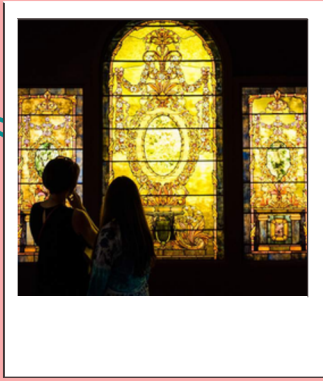


PUBLIC ART COLLECTION STOP 2 EMILY FOUNTAIN- CENTRAL PARK

150 W MORSE BLVD, WINTER PARK FL 32789

The City of Winter Park’s Public Art Collection features almost 100 pieces of art representing various mediums from artists around the world.

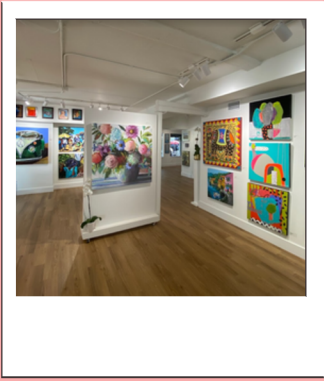
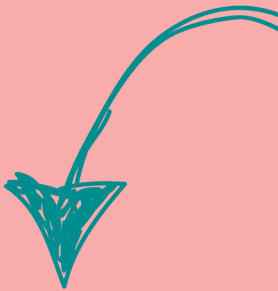
Learn more about this piece: [Emily Fountain](#)



THE CHARLES HOSMER MORSE MUSEUM OF AMERICAN ART

**445 N PARK AVE, WINTER PARK FL 32789
TUES-SAT 9:30AM-4PM, SUN 1-4PM, CLOSED MON *Free Fridays from 4pm-8pm Nov-Apr**

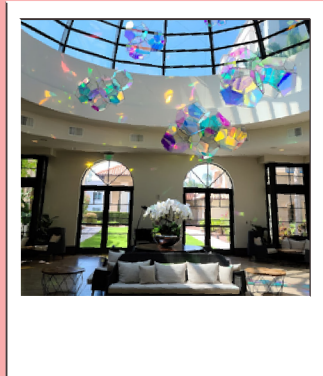
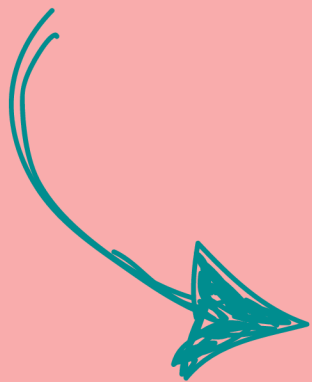
Home to the world’s most comprehensive collection of works by Louis Comfort Tiffany (1848-1933), including the chapel interior he designed for the 1893 World’s Columbian Exposition in Chicago, and art and architectural elements from his Long Island estate, Laurelton Hall.



THE GALLERY 32789

**515 N PARK AVE #114, WINTER PARK FL 32789
TUES-SUN 11AM-4PM, CLOSED MON**

A downtown gallery with mix of contemporary and classic art mediums, a tea room, and vibrant venue.



THE ALFOND INN

300 E NEW ENGLAND AVE, WINTER PARK FL 32789

The Alfond Inn is a boutique hotel in historic Winter Park, with luxury suites and works on view from Rollins Museum of Art’s permanent collection. Explore the art and gather for lunch or dinner in the hotel’s Hamilton’s Kitchen.