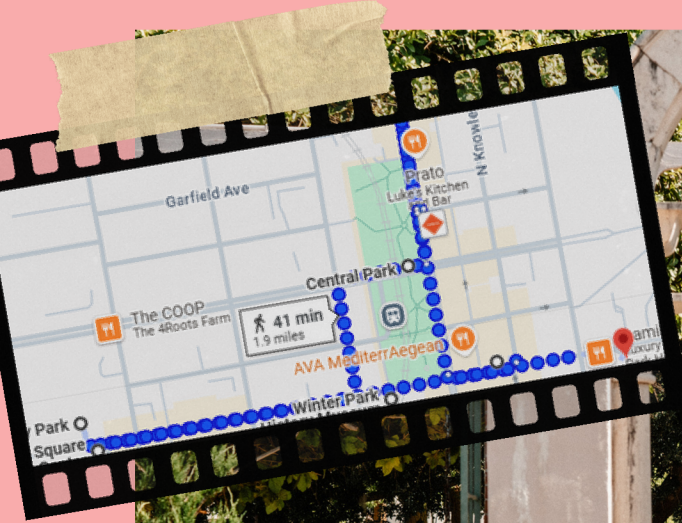


# A DAY FOR THE ARTS



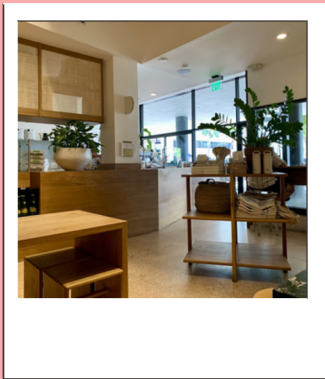
# WINTER PARK, FL

This self-paced, self-guided art tour showcases the talent, community, and history of Winter Park, Florida. Lasting approximately 2.5 hours, this walking tour includes many sights to explore, featuring the local art, food, businesses, and culture that define who we are as a city!

We have curated this art tour for you. We walked the route ourselves to ensure each unique spot fits the personality of the area. All of these are low cost or free activities. Keep us posted on your cultural adventures by following and tagging **@artsinorlando** on Instagram!

# EXPLORING HISTORIC WINTER PARK

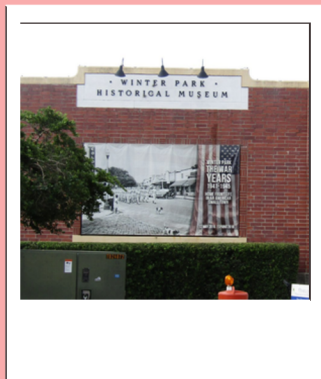
**\*Suggested start time:  
10:00am**



## **NEW GENERAL CAFE & COFFEE BAR**

**155 E NEW ENGLAND AVE, WINTER PARK FL  
32789  
TUES-SUN 8:30AM-3PM, CLOSED MON**

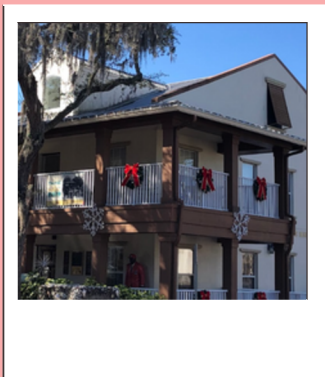
**A contemporary, sustainable coffee and general store. Freshly prepared food & pastries, amazing drinks, and home goods.**



## **WINTER PARK HISTORY MUSEUM**

**200 W NEW ENGLAND AVE, WINTER PARK FL  
32789  
CLOSED: SUN & MON, TUES-SAT 10AM-2PM**

**A free entry small historic gem, the Winter Park History Museum offers a glimpse into the history behind historic winter park.**



## **HANNIBAL SQUARE HERITAGE CENTER**

**642 W NEW ENGLAND AVE, WINTER PARK FL  
32789  
TUES-THUR 12-4PM, FRI 2:30-5:30PM, SAT  
10AM-2PM, CLOSED SUN-MON**

**Run by Crealde School of Art, this community center is located in a historic neighborhood.**

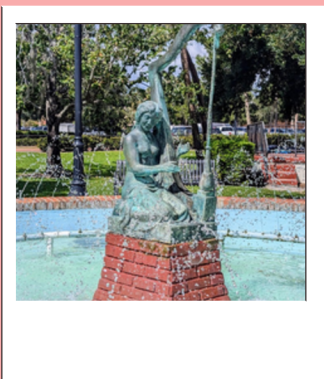
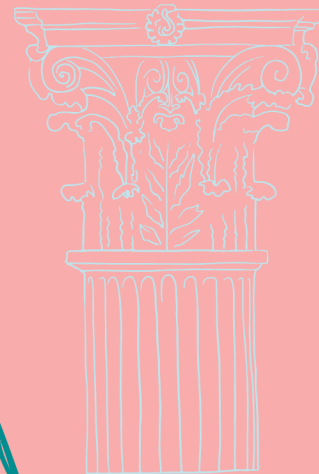


## **PUBLIC ART COLLECTION STOP 1 MOLECULAR DOG-SHADY PARK**

**721 W NEW ENGLAND AVE, WINTER PARK FL  
32789**

**Downtown Winter Park has a collection of public art sculptures, donated by the Albin Polasek Museum & Sculpture Gardens**

**Learn More about this piece: [Molecular Dog](#)**

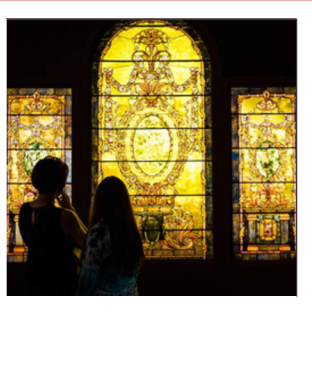


## **PUBLIC ART COLLECTION STOP 2 EMILY FOUNTAIN- CENTRAL PARK**

**150 W MORSE BLVD, WINTER PARK FL 32789**

**Downtown Winter Park has a collection of public art sculptures, donated by the Albin Polasek Museum & Sculpture Gardens**

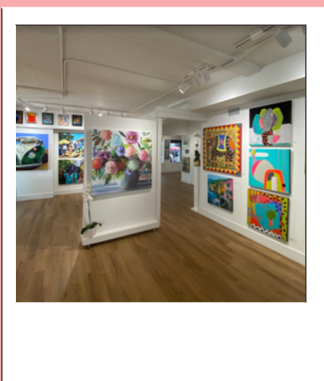
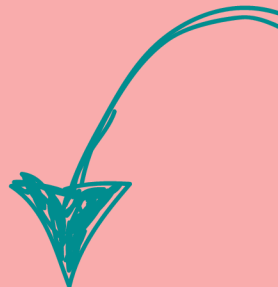
**Learn more about this piece: [Emily Fountain](#)**



## **THE CHARLES HOSMER MORSE MUSEUM OF AMERICA ART**

**445 N PARK AVE, WINTER PARK FL 32789  
TUES-SAT 9:30AM-4PM, SUN 1-4PM, CLOSED MON**

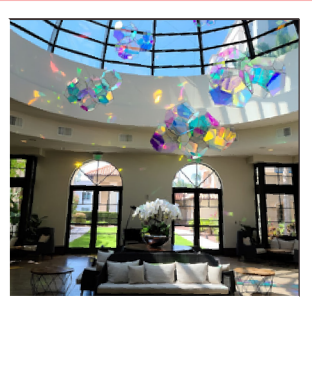
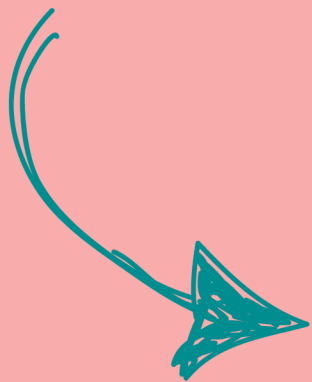
**Known for its Art Nouveau collection, this museum also houses the largest collection of Tiffany lamps.**



## **THE GALLERY 32789**

**515 N PARK AVE #114, WINTER PARK FL 32789  
TUES-SUN 11AM-4PM, CLOSED MON**

**A downtown gallery with mix of contemporary and classic art mediums, a tea room, and vibrant venue.**



## **THE ALFOND INN**

**300 E NEW ENGLAND AVE, WINTER PARK FL 32789**

**The Alfond Inn is a boutique hotel in historic winter park, with luxury suites and stunning art pieces throughout the establishment. Walk through the gallery, and stop for lunch or dinner in their lovely American cuisine restaurants.**