



United Arts
OF CENTRAL FLORIDA

2016 Annual Report to the Community



Vigil for *PULSE* victims

Front Cover: Garden Theatre, Mount Dora Center for the Arts, Orlando Museum of Art

A MESSAGE TO OUR COMMUNITY



Jean Grono-Nowry

Jean Grono-Nowry
Chair

Fiscal 2016 has been a spectacular year. In FY16, United Arts of Central Florida raised \$6.4 million across all revenue sources, an increase of \$537,901 versus prior year and 14.3% over our budgeted revenue target! The collaborative *Campaign for the Arts*, for the past three years, has exceeded its goal—and this year generated more than \$2 million dollars.

This was a year of national recognition for the arts in Central Florida with Orlando Mayor Buddy Dyer winning the prestigious 2016 Public Leadership in the Arts Award by the United States Conference of Mayors and Americans for the Arts. Additionally, Flora Maria Garcia received the 2016 Michael Newton Award from Americans for the Arts. She was recognized through this award for her innovation in developing private sector partnerships for the arts and for long-term achievement in effective and creative fundraising.

It was also a year of major grant awards, with a \$350,000 grant from the JPMorgan Chase Foundation to replicate the Orange County Evans High School *Career Pathways to Creative Sector Jobs* Program within The School District of Osceola County over the next two years. The grant is to expand a planned STEM high school into a STEAM High School, opening in 2018. For the second time, Walt Disney World Resort made a \$200,000 contribution through United Arts to fund a live theater production for all Orange County 8th graders. The live production of “The Giver” was performed by the Orlando Repertory Theatre at Dr. Phillips Center for the Performing Arts. Also for a second year in a row, Duke Energy awarded United Arts a \$50,000 grant to continue its diversity and inclusiveness initiatives within the cultural sector.



Flora Maria Garcia

Flora Maria Garcia
President & CEO

United Arts is thrilled to continue to serve Central Florida for its 27th consecutive year! Thank you to all of our donors, volunteers and supporters who have made this incredible year possible.





Florida Prize Exhibition, Orlando Museum of Art

TRUSTEE SUPPORT

United Arts Trustees are donors of \$100,000 or more. Their generous support of the arts, science and history in Central Florida distinguishes them as visionary philanthropic leaders. Their gifts provide foundational support for grant awards and critical institutional operating support. In addition, their funds, combined with those of generous corporate donors, provide a valuable matching pool used to inspire giving through United Arts' annual collaborative *Campaign for the Arts*. United Arts is pleased to recognize each Trustee for their generosity and leadership.

Alan Ginsburg
FAMILY FOUNDATION



JPMORGAN CHASE & CO.





Bach Festival Society of Winter Park

CAMPAIGN FOR THE ARTS

During the annual collaborative *Campaign for the Arts*, United Arts works in collaboration with local cultural institutions to raise funds in support of arts, science and history. The campaign runs from February 1 through May 1 each year, with an Early Bird phase beginning the week of Thanksgiving.

Donations to United Arts' *Arts for ALL* Fund directly support grants awarded through an informed, competitive and independent process as well as critical K-12th grade arts and cultural educational programming. Donors may designate to any cultural nonprofit institution throughout the campaign. Donors who designate gifts to the campaign's participating cultural partners qualifies for a 15 percent matching gift.

Committed corporations provide support through on-site Workplace Giving campaigns, where employees learn about United Arts and the organizations it funds. In FY16, 25 corporations and their employees generously contributed more than \$158,529.

In all, the 2016 collaborative *Campaign for the Arts* raised \$2,042,611, of which \$349,588 was secured through the Early Bird phase.

What Teachers are saying ...

"This experience of live theater was very enriching for my kindergartners. It built their interest in music, art, dance & drama and showed them how creativity can bring a storybook character to life right before their eyes!" - Teacher, Cypress Park Elementary

"The story-telling through dance and music is an authentic experience that all of my students, including those with limited English-speaking abilities can understand and enjoy."
- Teacher, Union Park Elementary

"I had many students excited as they realized that the places they see every day (and often take for granted) have rich and interesting history. I heard a lot of students planning to go and investigate their history, and expressing pride in their hometown for sometimes the first time. This experience was invaluable for these students - not only historically, but also culturally and personally." - Teacher, Lakeview Middle School

"Always important for my students to be exposed to new dance styles, especially those with a strong cultural component, since we rarely get to explore those styles in class."
- Teacher, Wekiva High

ARTS EDUCATION


United Arts facilitated more than 896,000 student experiences through its cultural partners. In Orange County Public Schools, ALL 2nd graders attended the Orlando Ballet, and ALL 3rd, 4th, and 5th graders attended the Orlando Philharmonic. Also, in The School District of Osceola County, ALL 5th graders attended the Orlando Philharmonic. United Arts funds visits to museums, attendance at performing arts centers, and artist residencies in schools to enhance curriculum.

UAARTSED.COM

United Arts manages UAArtsEd.com, an online directory of arts education programs for pre-K through 12th grade. Teachers can search for cultural programs, download lesson plans that tie to the Sunshine State Standards, and apply for funding, while parents can utilize the site to find family-friendly events and cultural summer camps. Funding for arts education opportunities is provided through Orange County Public Schools, The School District of Osceola County and the State of Florida Division of Cultural Affairs.

ARTS LEARNING GRANTS

United Arts expands opportunities for arts education to the wider community through its Arts Learning Grants program. The program has been instrumental in implementing new programs for at-risk youth, Spanish-speaking actors, senior citizens, and toddlers. In FY16, organizations provided 1,050 individuals with opportunities to learn about arts and culture. United Arts supports art for all ages.





2016 ARTS PRINCIPAL
ELEMENTARY SCHOOL DIVISION
United Arts of Central Florida and Orange County Public Schools recognizes
MRS. KATHY PETERSEN
For her outstanding leadership, vision, and commitment to excellence in the classroom.
United Arts of Central Florida
Presented at the 2016 Arts Principals Appreciation Breakfast

2016 ARTS PRINCIPAL
MIDDLE SCHOOL DIVISION
United Arts of Central Florida and Orange County Public Schools recognizes
DR. CHRISTOPHER CAMACHO
For his outstanding leadership, vision, and commitment to excellence in the classroom.
United Arts of Central Florida
Presented at the 2016 Arts Principals Appreciation Breakfast

2016 ARTS PRINCIPAL
HIGH SCHOOL DIVISION
United Arts of Central Florida and Orange County Public Schools recognizes
MS. MARGARET NAWFON
For her outstanding leadership, vision, and commitment to excellence in the classroom.
United Arts of Central Florida
Presented at the 2016 Arts Principals Appreciation Breakfast

Award recipients, Orange County Principals Appreciation Breakfast

PRINCIPALS APPRECIATION BREAKFAST

United Arts hosts the annual Principals Appreciation Breakfast to celebrate the achievements of principals who support exemplary arts programs, retain certified arts teachers in every school and work to make sure every student has access to quality arts education.

Orange County Public Schools celebrated its 10th annual Principals Appreciation Breakfast in 2016. The highlight of this year's breakfast was the Arts Principal Award, which recognizes principals who lead the way in supporting and promoting innovative, high-quality arts programs and arts instruction in their schools. Three award winners (one each from elementary, middle and high school levels) were featured in a panel discussion. At the event, attendees were eager to learn how, in an atmosphere of budget cuts and increasing requirements, these principals managed to keep the arts a strong part of their students' learning experience. The winning principals each received a \$1,000 cash award for their school's arts program, \$500 worth of art supplies, arts tickets and a *United ArtsCard*, a buy-one-get-one-FREE and discount card to over 20 regional arts, science and history organizations.



Also in 2016, United Arts started the first annual Principals Appreciation Breakfast for The School District of Osceola County. The breakfast, sponsored by Tupperware Brands, was themed for Cinco de Mayo and included performances by students, teachers and administrators and community arts groups celebrating the County's arts education accomplishments over the past year.



Orlando Science Center



UNITED ARTS GRANTS

United Arts provides crucial Operating Support Grants to arts, science and history organizations with budgets of \$25,000 or more who provide a full season of programming. Panels of community volunteers observe cultural events year-round, meet with applicants and recommend grants based on artistic merit, management, fiscal responsibility, and service to the community. Thirty-nine cultural organizations were funded in FY16 through this program.

The agency reaches out to grassroots and multicultural organizations through Mini-Grants. The program has three deadlines per year, a short application and one-month turnaround from submission to grant decision. Seventy-two percent of grantees are first-time recipients and 42% are culturally diverse organizations. Twelve organizations provided 22,222 cultural experiences to diverse segments of the community.

United Arts also provides technical assistance workshops for nonprofits to strengthen their skills in fundraising, grant writing and marketing.

Central Florida residents and visitors experienced the arts, science and history on more than 2.7 million occasions last year, made possible through 50+ cultural providers supported through these grant programs.



PROVIDING INFORMATION AND ACCESS

orlandoarts

MAGAZINE



The official publication of United Arts of Central Florida, *Orlando Arts Magazine* is a donor benefit for contributions to United Arts of \$50 or more. The magazine serves as a comprehensive guide to arts and cultural offerings in the four-county region.

Produced bi-monthly in cooperation with Visit Orlando, the official tourism association, the publication covers local dance, music, film, theater, visual arts and special events. It also includes articles about home décor and artful shopping and restaurants – because living well is an art.

UNITED ARTSCARD

The United *ArtsCard* is a donor benefit for contributions to United Arts of \$100 or more. Good for one year, the card is a valuable buy-one-ticket-get-one-FREE and discount card for over 20 arts, science and history organizations throughout Lake, Orange, Osceola and Seminole counties.



PROVIDING INFORMATION AND ACCESS

UnitedArts.cc is the official website for United Arts of Central Florida and a vital resource for donors, organizations seeking funding, and existing grantees. Organizations can learn about grant opportunities, apply for funding or manage their existing grants through the site. Visitors to the site can access featured articles from *Orlando Arts Magazine*, find information about United Arts' arts education programs, jump to OrlandoAtPlay.com for a calendar of local arts and cultural events, sign their company up for a Workplace Giving campaign, make a gift or pledge, or join the arts advocacy mailing list to help keep the arts alive in Central Florida. Take a moment and explore!





SIDESHOW

Creative City Project

FREAK SHOW

AS STRANGE

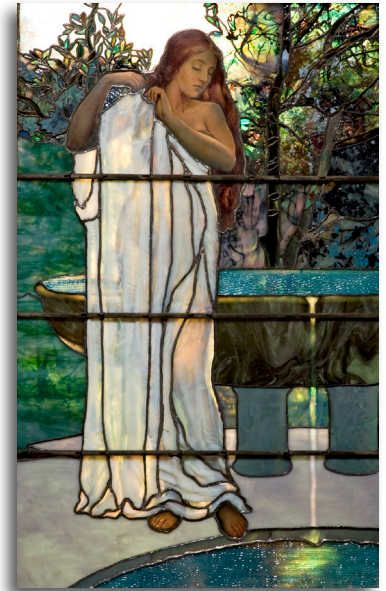
THE SOURCE FOR ARTS, CULTURE AND ENTERTAINMENT IN CENTRAL FLORIDA



ORLANDOATPLAY.COM

A program of United Arts of Central Florida and funded in part by Orange County Arts & Cultural Affairs and the Florida Division of Arts & Cultural Affairs, OrlandoAtPlay.com features an online event calendar with over 585 organizations posting more than 2,472 events annually, a public art guide with over 207 pieces and a restaurant directory of over 141 places to dine or grab a drink.

In FY16, the OrlandoAtPlay.com website attracted 85,763 users from all over the world. They visited the site 106,451 times and viewed 298,065 pages promoting the region's diverse and innovative arts, science and history programs and events.



Charles Hosmer Morse Museum
of American Art



Global Peace Film Festival

PARTNERS IN SUPPORT OF CULTURAL TOURISM – ORANGE COUNTY & UNITED ARTS

United Arts partners with Orange County Arts & Cultural Affairs to manage the Cultural Tourism and Cultural Facilities Funding recommended by the Arts & Cultural Affairs Advisory Council and approved by the Orange County Board of County Commissioners. As fiduciary agent, United Arts coordinates guidelines and workshops, facilitates the application process, supports the panel review process, and oversees the reporting and funds disbursement process for funded projects. To date: \$29.8 million in funding has been awarded, supporting 47 organizations and 298 projects/phases, and group marketing.

Orange County's goal is to elevate the status of arts and culture in Central Florida to that befitting a world-class community. Two major funding programs are used to further that goal:



- *Cultural Tourism Funding* supports projects that enhance the Orlando area's arts and cultural identity, reward quality and promote tourism, thus stimulating local economies and generating new jobs. Awards are determined through a competitive panel review process. In FY16, \$2.3 million was awarded for 27 projects, collaborative marketing programs, festivals, exhibitions and performances, bringing total grants to \$20 million since 2003.
- *Cultural Facilities Funding* supports the acquisition, renovation, construction or equipping of museums and performance venues in Orange County. In FY16, \$1.2 million was awarded for five projects. In the nine years this program has been funded, more than 9.8 million in critical support has been provided for local cultural museums and auditoriums.



**Orlando
Shakespeare Theater**



Career Pathways to Creative Sector Jobs, Evans High School

CAREER PATHWAYS TO CREATIVE SECTOR JOBS

Career Pathways to Creative Sector Jobs is a career training program at Evans High School designed to prepare youth for high-demand back-of-house arts and entertainment jobs at area theme parks and cultural institutions. Working together in a unified partnership through a grant provided by the JPMorgan Chase Foundation, United Arts of Central Florida coordinated planning efforts with Evans High School, Orange County Public Schools (OCPS), University of Central Florida, Valencia College, and Children's Home Society of Florida.

Through this program, students are able to earn a vocational certificate, a two-year degree from Valencia College, or a four-year degree from the University of Central Florida, depending on the level of complexity they wish to pursue. Curriculum in this program is designed specifically to reflect the job skills needed for employment in the arts and entertainment industry. Because of the program's groundbreaking success, Evans was designated as an Entertainment Magnet School in September 2016 by the OCPS school district.

In 2016, United Arts received a second grant from the JPMorgan Chase Foundation to replicate this program in Osceola County, at the new STEAM High School (Science, Technology, Engineering, Arts & Math) that will open in 2018.

FY16 COMBINED FUNDING – GRANTS & OTHER SUPPORT | LARGE BUDGET

| LARGE BUDGET ORGANIZATIONS | CAMPAIGN FOR THE ARTS & POWER2GIVE | UNITED ARTS FUNDING | | | TOTAL FUNDING |
|--|------------------------------------|---------------------|-----------|-------------------------------|---------------|
| | | CAMPAIGN MATCH | GRANTS | EDUCATION AND OTHER CONTRACTS | |
| Orlando Philharmonic Orchestra | \$382,885 | \$45,742 | \$202,126 | \$201,229 | \$831,982 |
| Orlando Shakespeare Theater | \$493,249 | \$47,547 | \$151,569 | \$15,920 | \$708,285 |
| Orlando Ballet | \$220,815 | \$27,127 | \$176,100 | \$56,180 | \$480,222 |
| Orlando Science Center | \$147,179 | \$21,856 | \$160,130 | \$65,277 | \$394,442 |
| Orlando Museum of Art | \$98,662 | \$15,607 | \$151,100 | \$72,900 | \$338,269 |
| Bach Festival Society of Winter Park | \$182,319 | \$22,227 | \$59,300 | \$31,494 | \$295,340 |
| Orlando Repertory Theatre | \$62,351 | \$6,887 | \$99,858 | \$22,651 | \$191,747 |
| Crealdé School of Art | \$48,247 | \$5,536 | \$63,433 | \$9,275 | \$126,491 |
| Enzian | \$58,270 | \$7,154 | \$36,330 | \$150 | \$101,904 |
| Art & History Museums–Maitland | \$44,011 | \$5,363 | \$39,130 | \$3,192 | \$91,696 |
| Orange County Regional History Center | \$30,585 | \$3,187 | \$25,000 | \$28,663 | \$87,435 |
| Mad Cow Theatre | \$45,784 | \$4,233 | \$23,386 | - | \$73,403 |
| Orlando Philharmonic Orchestra - Opera | \$57,164 | \$12,222 | - | - | \$69,386 |

FY16 COMBINED FUNDING – GRANTS & OTHER SUPPORT | LARGE BUDGET

| LARGE BUDGET ORGANIZATIONS (CONTINUED) | CAMPAIGN FOR THE ARTS & POWER2GIVE | UNITED ARTS FUNDING | | | TOTAL FUNDING |
|--|------------------------------------|---------------------|--------------------|-------------------------------|--------------------|
| | | CAMPAIGN MATCH | GRANTS | EDUCATION AND OTHER CONTRACTS | |
| Downtown Arts District/CityArts Factory | \$39,434 | \$2,424 | \$21,218 | - | \$63,076 |
| Wayne Densch Performing Arts Center | \$55,128 | \$676 | \$4,000 | - | \$59,804 |
| Garden Theatre | \$22,034 | \$1,423 | \$27,425 | - | \$50,882 |
| Seminole Cultural Arts Council | \$50,017 | \$575 | - | - | \$50,592 |
| The Association to Preserve the Eatonville Community | \$16,813 | \$2,059 | - | - | \$18,872 |
| Osceola Arts | \$11,845 | \$382 | - | \$1,250 | \$13,477 |
| Total All Large Budget | \$2,066,792 | \$232,227 | \$1,240,105 | \$508,181 | \$4,047,305 |

FY16 COMBINED FUNDING – GRANTS & OTHER SUPPORT | SMALL & MEDIUM BUDGET

| SMALL & MEDIUM BUDGET ORGANIZATIONS | CAMPAIGN FOR THE ARTS & POWER2GIVE | UNITED ARTS FUNDING | | TOTAL FUNDING |
|--|------------------------------------|---------------------|-------------------------------|---------------|
| | | GRANTS | EDUCATION AND OTHER CONTRACTS | |
| Central Florida Community Arts | \$10,619 | \$18,880 | \$1,300 | \$30,799 |
| Empty Spaces Theatre | - | - | \$23,175 | \$23,175 |
| Orlando Fringe | \$3,545 | \$17,308 | - | \$20,853 |
| Holocaust Memorial Resource & Education Center | \$600 | \$18,000 | - | \$18,600 |
| The Winter Park Playhouse | \$2,557 | \$9,000 | \$6,250 | \$17,807 |
| Central Florida Ballet | - | \$15,000 | \$900 | \$15,900 |
| Opera Orlando | \$6,535 | \$4,600 | \$4,626 | \$15,761 |
| MicheLee Puppets | \$100 | \$9,500 | \$4,300 | \$13,900 |
| Florida Symphony Youth Orchestra | \$1,362 | \$11,000 | - | \$12,362 |
| Albin Polasek Museum & Sculpture Gardens | \$100 | \$11,000 | - | \$11,100 |
| The Center for Contemporary Dance | \$250 | - | \$10,550 | \$10,800 |
| Mount Dora Center for the Arts | \$273 | \$10,017 | - | \$10,290 |
| Winter Garden Heritage Foundation | \$450 | \$7,378 | \$2,000 | \$9,828 |

FY16 COMBINED FUNDING – GRANTS & OTHER SUPPORT | SMALL & MEDIUM BUDGET

| SMALL & MEDIUM BUDGET ORGANIZATIONS (CONTINUED) | CAMPAIGN FOR THE ARTS & POWER2GIVE | UNITED ARTS FUNDING | | TOTAL FUNDING |
|---|------------------------------------|---------------------|-------------------------------|---------------|
| | | GRANTS | EDUCATION AND OTHER CONTRACTS | |
| Leesburg Center for the Arts | \$3,750 | \$5,780 | - | \$9,530 |
| Urban Rethink Foundation | - | \$9,431 | - | \$9,431 |
| Global Peace Film Festival | \$209 | \$7,660 | \$657 | \$8,526 |
| Osceola County Historical Society | - | \$7,093 | - | \$7,093 |
| Orlando Gay Chorus | \$207 | \$6,590 | - | \$6,797 |
| Steinway Society of Central Florida | - | \$6,790 | - | \$6,790 |
| Bay Street Players | - | \$6,000 | - | \$6,000 |
| RS&C Productions | - | - | \$4,944 | \$4,944 |
| Performing Arts Maitland | \$150 | \$4,670 | - | \$4,820 |
| Asian Cultural Association | - | \$4,690 | - | \$4,690 |
| Voci Dance | - | \$1,500 | \$3,000 | \$4,500 |
| Winter Park Historical Society | - | \$4,460 | - | \$4,460 |
| Messiah Choral Society | \$3,068 | \$1,324 | - | \$4,392 |

FY16 COMBINED FUNDING – GRANTS & OTHER SUPPORT | SMALL & MEDIUM BUDGET

| SMALL & MEDIUM BUDGET ORGANIZATIONS (CONTINUED) | CAMPAIGN FOR THE ARTS & POWER2GIVE | UNITED ARTS FUNDING | | TOTAL FUNDING |
|---|------------------------------------|---------------------|-------------------------------|---------------|
| | | GRANTS | EDUCATION AND OTHER CONTRACTS | |
| Creative City Project | \$1,512 | \$2,664 | - | \$4,176 |
| Lake Eustis Museum of Art | - | \$3,470 | - | \$3,470 |
| Melon Patch Players | - | \$3,470 | - | \$3,470 |
| A Gift for Teaching/Music | \$3,000 | - | \$300 | \$3,300 |
| Osceola Performing Arts Center | - | - | \$2,700 | \$2,700 |
| Playwright's Round Table | \$100 | - | \$2,555 | \$2,655 |
| Florida Humanities Council | - | \$2,500 | - | \$2,500 |
| Life Concepts dba Quest | - | \$2,500 | - | \$2,500 |
| Timucua Arts Foundation | \$25 | \$2,000 | - | \$2,025 |
| Alternate Roots | - | \$2,000 | - | \$2,000 |
| Orlando Community Arts | - | \$2,000 | - | \$2,000 |
| Shine/Pine Hills Performing Arts Center | - | \$2,000 | - | \$2,000 |
| Yow Dance | - | \$2,000 | - | \$2,000 |

FY16 COMBINED FUNDING – GRANTS & OTHER SUPPORT | SMALL & MEDIUM BUDGET

| SMALL & MEDIUM BUDGET ORGANIZATIONS (CONTINUED) | CAMPAIGN FOR THE ARTS & POWER2GIVE | UNITED ARTS FUNDING | | TOTAL FUNDING |
|--|------------------------------------|---------------------|-------------------------------|------------------|
| | | GRANTS | EDUCATION AND OTHER CONTRACTS | |
| HAPCO Music Foundation | - | \$1,770 | - | \$1,770 |
| Goldsboro West Side Community Historical Association | - | \$1,500 | - | \$1,500 |
| Child of this Culture Foundation | - | \$1,200 | - | \$1,200 |
| Ballet Fedova | - | \$1,000 | - | \$1,000 |
| Casa de Mexico | - | \$1,000 | - | \$1,000 |
| The Celebration Foundation | - | \$1,000 | - | \$1,000 |
| Emotions Dance | - | \$1,000 | - | \$1,000 |
| Hatian American Art Network | - | \$1,000 | - | \$1,000 |
| Mount Dora Music Festival | - | \$1,000 | - | \$1,000 |
| Solar Healing Center | - | \$1,000 | - | \$1,000 |
| All Other Gifts, Grants and Service Contracts | \$1,592 | \$4,678 | \$48,205 | \$54,475 |
| Total All Small & Medium Budget | \$40,004 | \$238,423 | \$115,462 | \$393,889 |





The Nutcracker, Orlando Ballet

2016 CORPORATE & GOVERNMENT DONORS

Trustees (\$100,000 - \$250,000+)

City of Orlando and Employees
Darden Restaurants, Inc. and the
Darden Restaurants Foundation
JPMorgan Chase Foundation
Orange County, Florida and Employees
Orange County Public Schools and Employees
Seminole County, Florida and Seminole County
Public Library System
University of Central Florida and Employees
Walt Disney World Resort

Associate Trustees (\$50,000 - \$99,999)

Duke Energy and Employees
Florida Blue
Florida Department of State
Greater Orlando Aviation Authority
Lockheed Martin and Employees
Lowndes, Drosdick, Doster, Kantor & Reed, P.A.
and Employees
The Massey Services Family and Team Members
Harvey L. and Carol Massey,
Andrea Massey-Farrell and James Farrell,
Tony and Jann Massey

Chairman's Circle (\$25,000 - \$49,999)

Allen Associates - International Marketing and
Sales
Bank of America
Orlando Magic and Employees
Wells Fargo and Employees

President's Circle (\$10,000 - \$24,999)

Baker Barrios Architects, Inc. | FUSION
City of Winter Park
Millenium Management Corporation
Orlando Utilities Commission and Employees
Premiere Show Group
The School District of Osceola County
SunTrust Bank, Central Florida,
SunTrust Foundation and Employees
Tupperware Worldwide
1 Anonymous Donor

Platinum Circle (\$7,500 - \$9,999)

Dean Mead Employees
Tavistock Development Company
Gold Circle (\$5,000 - \$7,499)
Bright House Networks, LLC

Orlando Science Center Employees
Rollins College Employees
SeaWorld Parks and Resorts Orlando
Valencia College
Silver Circle (\$2,500 - \$4,999)
Amazon Hose & Rubber Company
Comcast Cable
DAC Bond - Paula Stuart
Holiday Inn Club Vacations
Holland & Knight, LLP Employees
United Arts of Central Florida Employees
ZeroChaos

Bronze Circle (\$1,000 - \$2,499)

ABC Fine Wine & Spirits
Baker, Donelson, Bearman,
Caldwell & Berkowitz, PC
Buddy Dyer for Mayor
Centerplate
CNL Financial Group Employees
For Art Group, Cultural Ambassadors
Hometown Entertainment
Houck Talent, Inc.

Jill S. Schwartz & Associates, P.A.
in honor of Harriett Lake
The Kessler Collection
KPMG, LLP Employees
Odd-o-Ts' Entertainment in honor of
all those that keep us performing!
Orlando Federal Credit Union
Perez-Kelly Law Firm
PineLoch Management Corporation
Seay Business Solutions, LLC -
Stephen M. Seay BG, USA (Ret.)
Smart City
1 Anonymous Donor



Singin' in the Rain, Garden Theatre

2016 INDIVIDUAL AND FOUNDATION DONORS

Trustees (\$100,000 - \$250,000+)

Alan Ginsburg Family Foundation
Elizabeth Morse Genius Foundation

Associate Trustees (\$50,000 - \$99,999)

Edyth Bush Charitable Foundation
Andrea Massey-Farrell and James Farrell
Harvey L. and Carol Massey
Tony and Jann Massey
Frank Santos and Dan Dantin

Chairman's Circle (\$25,000 - \$49,999)

A Friends' Foundation Trust
Jodie A. Hardman
Ford W. Kiene
Rita and John Lowndes
Ken and Trisha Margeson
Dr. Joe and Sue Warren in honor of
Dr. John Sinclair

President's Circle (\$10,000 - \$24,999)

David and Judy Albertson
Howard Britt
M. Elizabeth Brothers
Whitworth Cotten in memory of
my wife Martha DeNeen Cotten
Devine Family Foundation
The Dick and Mary Nunis Charitable Gift Fund
of the Ayco Charitable Foundation
Mary and Frank J. Doherty

Ava and Art Doppelt
Robert and Tricia Earl
Andrea T. Eliscu in honor of
The Eliscu Family
Laraine and Phil Frahm
Edward Hensley
Mr. Alex and The Hon.
Cynthia Mackinnon
Mary Palmer Family Foundation in memory
of Amy Catherine Palmer
Galen Miller in honor of Tiffany Tankersley

Terry and Robin Olson
Publix Super Markets Charities
Jim and Valerie Shapiro
Simon and Ellen Snyder
William and Phaedra Steele
CP and Margery Steinmetz
The Tiedtke Family
Kathryn Chicone Ustler
5 Anonymous Donors

Platinum Circle (\$7,500 - \$9,999)

Gordon and Susan Arkin
Marilyn S. Goldman
Pat and Audrey Knipe
The Martin Andersen-Gracia
Andersen Foundation
Bosco R. and Beverly J. Slaughter
1 Anonymous Donor

Gold Circle (\$5,000 - \$7,499)

John W. and Linda Cone Allen
Kurt L. Anderson
Sally Blackmun and Michael Elsberry
Alana and Matt Brenner
Dr. Chris Crotty and Ms. Janie Brownlee
Tom and Kathy Cardwell Charitable Fund
of the Schwab Charitable Fund
Clifford and LaVonne Graese Foundation
Hillary S. and Jay M. Cohen
Valerie and Paul Collins
Carl and Ann Croft
Edward and Helen Layman Family Fund
Elaine Berol Taylor &
Scott Bevan Taylor Foundation
Lisa and Dykes Everett
Terri and Michael Harding
Mr. and Mrs. L. P. Herzog
Hugh and Caroline James
Marc and Henrietta Katzen
Jim Kersey
Judy and Tony Lutkus
Lester and Sonia Mandell
Alex and Juliet Martins
The Melrose Foundation/Jack Hanson
and Grant Gribble
Robin H. Murphy
Blair and Diane Murphy

Beth and Jack Nagle in honor of John Sinclair
Clarence Otis Jr. and Jacqueline L. Bradley
Sibille Pritchard
Alexis C. Pugh
The Rev. and Mrs. Eric Ravndal III
in honor of Dr. John V. Sinclair
Wayne and Dr. Robin Roberts
The Roper Family Foundation Inc.
John and Margaret Sanders
John Schell
Salli and Greg Setta
David Simon
Mr. and Mrs. Charles Simpson
Drs. John and Gail Sinclair
Stephen H. Goldman Foundation
Waggoner Foundation in memory
of Robert Waggoner
William Newkirk and Cheryl Tschanz
Family Foundation
Robert B. White Jr.
Ying Family Foundation
Armand and Alison Zilioli
Anonymous in honor of Terry Olson
Anonymous in memory of Grover Slung
2 Additional Anonymous Donors



Florida Symphony Youth Orchestra

2016 INDIVIDUAL AND FOUNDATION DONORS

Silver Circle (\$2,500 - \$4,999)

Brian Ainsley and Candice Crawford
Andy and Autumn Ames in memory
of John Tiedtke

Beth Barnes and John Crocitto
John and Lee Benz
Joe and Carol Bert

Carol-Lynn Bevc and Frank Bevc
Jeanne Miles Blackburn
Berl Brechner

Sherri and David Bunye
O'Ann and Pat Christiansen
Debbie Clements

Drs. Jeff Cohen and Luci Belnick
Duncan DeWahl
Donna Dowless

Dr. Leonard and Seline Dreifus
Judith Duda and Howard Weber
George S. Fender in honor of

American military forces
Carol Stanley Fenner
Randolph and Susan Fields

Janice G. Gruber
Dr. Stephen and Ruth Ann Heller
John and Martha Hitt

Nancy C. Jacobson and James R. Lussier
Stacey R. Johnson
Michael J. and Aimee Rusinko Kakos

Norma and Bernard Kaplan
RK and Faron Kelley
Mary F. Kelsh
M. Virginia Klaasen in memory of

B. James Klaasen
Drs. Susan Cohn Lackman and
Richard D. Knapp

Harriett Lake
Mary Laurie Lane
Matthew Levine

John and Pamela Lyle
Dr. Alfonso Migliara Jr.
Cindy and Frank Murray

Sanford Neubarth
Michael A. Nocero, Jr. in memory of
Mary Jo Nocero

John Parker and Deede Sharpe
Ronald and Carrie Patterson
Roger and Gloria Pickar

Christopher and Carol Ranck
Mr. and Mrs. Brad Richmond
Rita and Jeffrey Adler Foundation

Corrine K. Roy
Kenneth S. Shappell
Diane and Robert Smedley

Drs. David Smuckler and Maxine Tabas
Mr. and Mrs. Nicholas J. St. George
Judith Thompson

Cynthia Tomlinson
Joan and Harry Travis
Leila Edgerton Trisemen
Dr. Jessica Vaught
Richard and Jeanne Vinci
Harold and Libby Ward
Louise and Dick Weiner in honor of

Harriett Lake
Peter and Frances Weldon
Gayle Wirtz

Tess Wise
Leighton and Phyllis Yates
Jay Yellen and Elizabeth Maupin

Tom and Penny Yochum
4 Anonymous Donors

Bronze Circle (\$1,000 - \$2,499)

Glenn and Stacey Adams
Stacey Young Adams

Matthew and Rebecca Ahearn
Michael "Skip" Alderman
Maria Alvarado

Kim Ashby in honor of Bob and Katy Ashby
David B. Baer
James and Deborah Balaschak

David F. Baldree
Nathan and Lynda Balint
Richard and Nancy Banks
Durham and Jan Barnes

Jody and Nicole Barry
Dick and Andrea Batchelor
Donna Mirus Bates
Rocky and Cissy Bergman
Dr. and Mrs. Donald G. Beyer
William F. Billingsley III
Patti Black

Ann and Derek Blakeslee
David Blanc
Carolyn Blice

Darryl M. Bloodworth
Warren and Elise Bloom
Albert and Cheryl Bogdanowitsch

Col. and Mrs. Russell T. Boice
Jill and Dean Bosco
Susan and Clancey Bounds

Scott Bowman and Luis Hernandez
Jacqueline Bozzuto
Connie and Roy Brand

Jackie Brockington
Nicki and Jeff Bromme
Lawrence D. Brown, M.D.

Laurie Burns
John and Jennifer Casebier
Michael Cassidy

Mia Castro
Linda and Bruce Chapin
Amy K. Chapman



Culture Pop, Art & History Museums—Maitland

2016 INDIVIDUAL AND FOUNDATION DONORS

Bronze Circle (\$1,000 - \$2,499) Cont'd

Charles and Renee Charlan
Christopher-Meunch Family
Dr. and Mrs. Delos Clift
Beryl R. Colbourn in memory of
Dr. Trevor Colbourn
Teresa and Jay Colling
David and Kristin Congdon
Carol and Ted Conner
Robert D. and Athalia Cope
Stanley J. Cording
Andrea and Stephen Cox
Susan M. Curran
Fred and Gayle Curtis
Diane Davey and Dave Wiebe
Alan and Susan Davis
Francie and Wayne Dear
Howard Scheiter Decker
Christy Delk
Patty and Jim DeYoung
James B. Dorman, Jr.
Dr. Patsy Duphorne in memory of
Marvin M. Duphorne
Michael Dwulit
Ted B. Edwards
Mary Anne Elwood
Lee and Carolyn Eubank
José A. Fajardo

Dr. Jay and Randy Falk
Florida Charities Foundation
Barbara and Richard Fulton
Elaine and Robert Gamson
Gayle G. and Marlene Gardner
Bro and Dave Garland
Dr. Matt Gay
Dr. and Mrs. Charles W. George
Suzanne E. Gilbert
Sharon Ginsburg in honor of Harriett Lake
Linda Landman Gonzalez
Freddi and Jim Goodrich
Kathryn and Bud Grammer
Carol and Leonard Greenbaum
Dr. Scott Greenwood and
Dr. Pamela Freeman-Greenwood
Jean Grono-Nowry
Dr. and Mrs. Yu Hak Hahn
John and Virginia Hall in honor of
Tye VanBuren
Paul M. Harmon
Michael Haye
Marty and Jim Heekin
Jim Helsinger and Suzanne O'Donnell
Erica Henri in honor of Flora Maria Garcia
Ruby Homayssi, LCDR, USN Ret.
Martha and Lynn Howle
Dustin and Angel Houck

Betty and Paul Hoyer
Joseph Richard Hurt and Jan Jones Hurt
Allen and Dana Irwin in honor of
John Sinclair's 25th Anniversary
with Bach Festival Society
Dr. Diane M. Jacobs
Pamela Johnson
Bette Jore
Frank and Etta Jean Juge
Lisa Lobao Junkerman
Keith and Claudia Kasen
Maureen and Mark Kennedy
Richard and Martha Kessler
Mr. and Mrs. Philip Kobrin in
memory of Jack and Sara Kobrin
Michael and Darcy Krajewski
Col. and Mrs. Robert and Jerilyn Kreps
Dr. Jee Sang and Keumja Kwon
Karen and Mickey Lane
Meredith E. Level
Dr. Michael and Diane Levine
Dr. Dorothy Lloyd
Wilson and Theresa Lopez
Brendan Lynch
Jim MacPhee
Janine and Jim Madison
Edward Manning
Dr. and Mrs. Thomas L. March

James and Sarah Martin
John Martin and Charles Billings
David R. Mattson
Jody and Craig Maughan
Thomas Maurer
Dr. and Mrs. Jay McClelland
Mark McHugh
Dan and Liz McIntosh
W. Chad McKendrick
John and Rebekah McReynolds
Bob Mead
Dr. and Mrs. Robert Metzger
Mark and Christine Middlebrook
Dr. Margaret and Mr. Charles E. Miller in memory
of Jennifer C. Miller, our daughter
Jim and Cynthia Milligan in honor of Jacklyn
Wright
Sally A. Milton in honor of Harriett Lake
Clay and Kim Mitchell in memory of
Dr. William C. Mitchell
Linda Modrak and William Gallo in
honor of Dr. John Sinclair
Jeffrey and Mindy Moore in honor of Terry Olson
Dale and Martha Morrison
Jan Moss
John Niss, Roger and Lisa Mouton
Dr. and Mrs. H. Munro in memory of
Barbara Munro and Leslie Rankin



Crealdé School of Art

2016 INDIVIDUAL AND FOUNDATION DONORS

Bronze Circle (\$1,000 - \$2,499) Cont'd

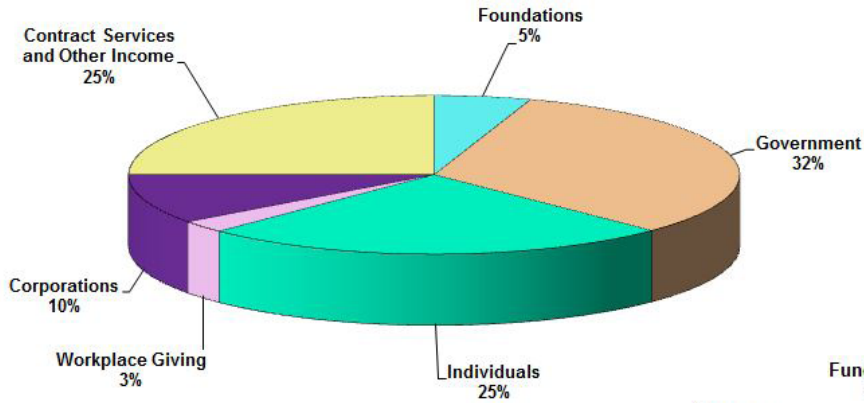
JoAnn Newman
Catherine A. Ni
Antonia C. Novello, M.D.
Daniel O'Keefe
Leslie King O'Neal
Molly O'Neill
Borron and Beppy Owen
Glenn and Beverly Paulk
Penelope Perez-Kelly
Dw Phineas Perkins
John and Anne Perry
Eddie and Melanie Pipkin
Dr. Daniel and Lesley Podberesky
Albert and Lisa Prast
Dr. and Mrs. Don M. Preble
Steven and Nancy Price
Jennifer R. Quigley
Fred and Jeanie Raffa
Jolyon Ramer in memory of
Dorothy Ramer
Keith Ramsey
Bill and Joan Randolph
James and Beverly Rawlings
Diane and Phil Reece
Steve and Shyla Reich
William and Barbara Robinson

Eduardo Rodriguez
Joan Ruffier
John D. Ruffier
Donald Rupe
James and Judy Russell
Michael and Theresa Ryan
Betsy and Joe Samuel
Judy and Stan Sandefur
Dr. Richard Sandler
Joe Saunders
Andy & Linda Schaidt
Rick Schell
Frank Schornagle
Sally and Jack Schott
Jim and Pat Schroeder
Jill S. Schwartz/Jill S. Schwartz &
Associates, P.A. in honor of Harriett Lake
Stephen M. Seay BG, USA (Ret.)
Dr. Peter and Carol Selassie
Geanne and Adrian Share
Joel H. Sharp, Jr.
Winifred J. Sharp
James G. Shepp in honor of
Suellen Fagin-Allen and David Schillhammer
Sidhu Family
Jean E. Siegfried
David Sigalov and Heather Walsh
Greg Singleton

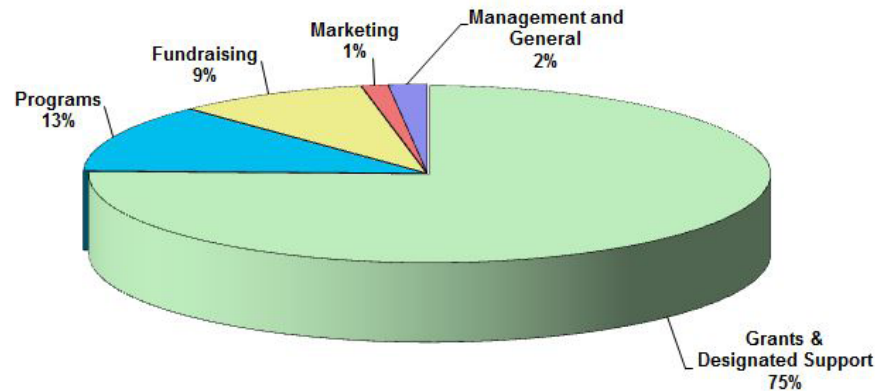
Jonathan Smiga
Barbara J. Smith
Celnah Smith in memory of
my husband Leon Smith
George and Gretchen Smith
Mark Edward Smith
Dr. Joshua Smith-Benson
Dennis Sobeck
Gary and Barbara Sorensen
Jack Starling
George and Barbara Stedronsky
Rene Stutzman
David and Diane Sutter
Jackie and Rod Sward
Vernon Swartsel
Bill and Kathy Taulbee
Cory L. Taylor
Leslie J. Temmen
Mr. and Mrs. David R. Terry, Jr.
Deborah and Garritt Toohey in honor of Althea
Rokes Kurry and memory of Ted Toohey
Laureen J. Trudell
Anthea M. Turner
Jerry and Barbara Twedt
Mr. and Mrs. Keith Van Allen
Mr. Hardy Vaughn
Drs. Kenneth and Bernadette Vehec
Dr. Lawrence and Nancy Wagers

George A. Wallace
Catherine Warner in honor of Terry Olson
Tim Warzecha and Bill Neighbors
Neil and Malka Webman
Ronald Webster and Susan Webster
Barbara Weinreich
Dr. Miriam Weston
David Wheeler
Alan Whittaker
Trudy Wild
Gwendolyn and Wilford Williams
John and Helen Williams
Jon Wood
Kathy and Jon Yergler
Austin A. Zakari
Dr. and Mrs. Lee Zehngelbot
Todd Zimmerman
Anonymous in honor of Roger Pickar
13 Additional Anonymous Donors

WHERE OUR SUPPORT COMES FROM



WHERE OUR SUPPORT GOES



UNITED ARTS OF CENTRAL FLORIDA INC.

FINANCIAL ACTIVITIES SUMMARY | YEAR ENDED JUNE 30, 2016

WHERE OUR SUPPORT COMES FROM

Campaign and Other Revenue:

| | |
|--------------------------------|--------------------|
| Individuals | \$1,588,058 |
| Corporations | \$643,167 |
| Foundations | \$325,000 |
| Government | \$2,054,159 |
| Workplace Giving | \$158,736 |
| Total Campaign Revenues | \$4,769,120 |

Other Revenue:

| | |
|--|--------------------|
| Contract Services and Other Income | \$1,589,852 |
| Total Support and Other Revenue | \$6,358,972 |

WHERE OUR SUPPORT GOES

Grants, Support and Operations:

| | |
|-----------------------------|-------------|
| Grants & Designated Support | \$4,441,193 |
| Programs | \$732,477 |
| Fundraising | \$533,805 |
| Marketing | \$73,229 |
| Management and General | \$107,591 |

Total Grants, Support and Operations **\$5,888,295**

Unrestricted Net Assets at 06/30/16 **\$624,737**

A copy of the audited financial statements is available at www.UnitedArts.cc -- or call 407.628.0333



United Arts Board Chair, Jean Grono-Nowry; City of Orlando Mayor, Buddy Dyer; Americans for the Arts Senior Director of State and Local Government Affairs, Jay Dick; United Arts President & CEO, Flora Maria Garcia, presenting Mayor Dyer with the National Arts Leadership Award at Orlando City Hall

UNITED ARTS OF CENTRAL FLORIDA INC.

2016 BOARD OF TRUSTEES

Alan Ginsburg Family Foundation - Alan Ginsburg
City of Orlando - The Honorable Buddy Dyer
Darden Restaurants Foundation - Stephanie Ghertner
Elizabeth Morse Genius Foundation, Inc. - Bonnie Hubbard
JPMorgan Chase Foundation - Joseph S. Terry
Orange County, Florida - The Honorable Teresa Jacobs
Orange County Public Schools - Dr. Barbara Jenkins
Seminole County, Florida - The Honorable Lee Constantine
University of Central Florida - Dr. John C. Hitt
Walt Disney World Resort - Jim MacPhee

2016 BOARD OF DIRECTORS

Jason Altmire, Florida Blue Foundation
Sharon Arroyo, Duke Energy
Paul L. Baker, Sanford Burnham Prebys Medical Discovery Institute
David Blanc, Advanced Care Scripts
Bonny Block, Balfour Beatty Construction
Cecelia Bonifay, Akerman LLP
Howard Britt, Premier Show Group
The Honorable Lee Constantine, Seminole County, Florida
Danielle Saba Hollander, Visit Orlando
Andrea DeLoach, DeLoach Consulting
Judy Duda, Community Leader
Deborah Fahmie, The School District of Osceola County

2016 BOARD OF DIRECTORS EXECUTIVE COMMITTEE

Jean Grono-Nowry - Chair - Massey Services
Richard H. Sandler - Vice Chair - Nemours Children's Hospital & University of Central Florida
Daniel O'Keefe - Treasurer - Moore, Stephens, Lovelace PA
Jennifer Quigley - Secretary - WBQ Design & Engineering, Inc.
Linda Landman Gonzalez - Immediate Past Chair - Orlando Magic
Wilson Lopez - Chair, Audit & Finance Committee - RSM US LLP
Leslie McClelland - Chair, Development Committee - Trinity Preparatory School

Suzanne Gilbert, Holland & Knight
Ron Ginsberg, Ginsberg Family Foundation
Marcia Hope Goodwin, City of Orlando
Roseann E. Harrington, Orlando Utilities Commission (OUC)
Edward Hensley, AssistRx, Inc.
Frank Ioppolo, ILG Law Group
Dr. Barbara M. Jenkins, Orange County Public Schools
Dr. Stacey Johnson, Valencia College, East Campus
Mark Jones, Orlando Regional Medical Center
Paul Lartonoix, University of Central Florida
S. Brendan Lynch, Lowndes, Drosdick, Doster, Kantor & Reed, PA
Dr. Elizabeth Ann McGee, Seminole State College

Kate Wilson - Chair, Standards & Allocations Committee
Wells Fargo
Stephanie Ghertner - At Large - Darden Restaurants, Inc.
The Honorable Jennifer Thompson - At Large - Orange County, Florida
Tony Jenkins - At Large - Florida Blue
Jim MacPhee - At Large - Walt Disney World Resort
Penelope Perez-Kelly, Fisher Rushmer, P.A.
Flora Maria Garcia - Ex Officio, United Arts of Central Florida

Larry Meador, Evok Advertising
Christine Moore, Orange County Public Schools
Diane O'Dell, Universal Orlando
Terry Olson, Ex Officio, Orange County Arts & Cultural Affairs
Karen Sheehan, Tupperware Brands Corporation
Aloysio Vasconcellos, Westchester International
Rizwan Zaman, MD Back Office
Penelope B. Perez-Kelly, Fisher Rushmer, P.A.
Melvin Rogers, MS, University of Central Florida
Dr. Richard Sandler, Nemours Children's Hospital
Bryce L. West, The Bryce L. West Foundation, Inc.

Your **single-source** solution for

DESIGN print & MAIL

Progressive Communications Int'l is a proud sponsor
of United Arts of Central Florida

Meet **Progressive Communications**

—your partner for award-winning design, full-service commercial printing and state-of-the-art mail services. With all three located in one facility, you'll save time and money with Progressive.

**For your next project,
make just one call—**

Progressive Communications.



progressivecommunications.com

For more information, please contact Keith Kent at 407.936.2756 • kkent@pci4u.com



The next generation of arts enthusiasts ...

The logo for United Arts of Central Florida features the words "United Arts" in a white, sans-serif font. The text is set against a horizontal brushstroke background that transitions from a vibrant orange on the left to a deep red on the right. The brushstroke has a textured, painterly appearance with visible brush marks.

United Arts

OF CENTRAL FLORIDA

2450 Maitland Center Pkwy, Suite 201
Maitland, FL 32751-4140

NON-PROFIT ORG.
US POSTAGE PAID
MAITLAND, FL
PERMIT #354